

Wall mounted receptacle

Part no. 2684

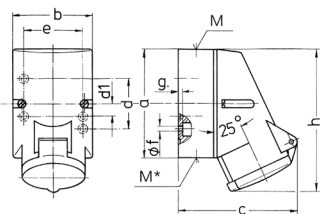


- screw terminals
- internal fixing
- one cable entry at top and one blind entry (can be cut out) at the bottom
- enclosure base can be turned 180° (for 5-pole design)

Technical specifications

Ampere	16 A
Poles	3 p
Voltage	50-500 V
Clock position	1 h
Connection technology	Screw terminals
Contact	standard
Protection type	IP 44
Weight	180 g
Declaration of Conformity	VDE, EAC, CQC

Drawing



Drawing	Amp.	16		
		Poles		
1 MB 209		3	4	5
Dim. in mm	a	87	100	100
	b	64	75	75
	c	99	110	113
	d	40	-	-
	d1	-	11	11
	e	50	59	59
	f	4.5	5	5
	g	4	4	4
	h	115	125	128
	M	20	20	20
	M*	M20 (blind) to be cut out		
Max. cable diam. (mm)		15	15	15
Terminal for cond. cross section (mm ²) min.-max.		1.5	1.5	1.5
		-4	-4	-4