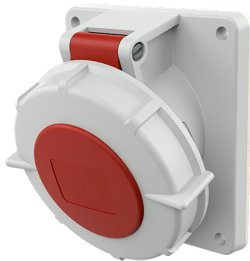


Panel mounted receptacle

Part no. 3333

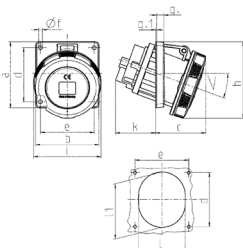


- screw terminals
- **X-CONTACT**
- uniform fixing hole spacing

Technical specifications

Ampere	16 A
Poles	5 p
Voltage	400 V
Clock position	6 h
Hertz	50-60 Hz
Connection technology	Screw terminals
Contact	standard
Protection type	IP 67
Flange	110x106 mm
Fixing hole	90x90 mm
Inclination	15 °
Weight	420 g
Declaration of Conformity	VDE, EAC

Drawing



Drawing	Amp.	16	32	63	125
1 MB 580/601	Poles	5	5	4	5
Dim. in mm	a	110	110	110	110
	b	106	106	106	106
	c	55	59	84	84
	d	90	90	90	90
	e	90	90	90	90
	f	5.2	5.2	6.5	6.5
	g	8	8	12	12
	g.1	2	2	2	2
	h	110	115	128	128
	i	89	106	113	113
	k	28	46	64	67
	l	78	87	92	92
	l1	-	-	98	98
	<	15°	15°	20°	15°
Terminal for cond. cross section (mm²) min.-max.		1.5	2.5	6	6
		-4	-10	-20	-20