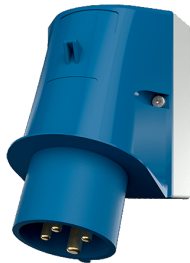


Wall mounted inlet

Part no. 335

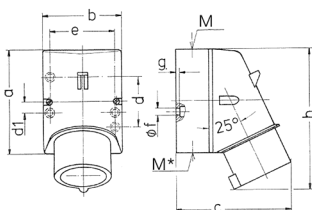


- screw terminals
- enclosure base with stamped recess for quick cutting out

Technical specifications

Ampere	16 A
Poles	4 p
Voltage	230 V
Clock position	9 h
Hertz	50-60 Hz
Connection technology	Screw terminals
Contact	standard
Protection type	IP 44
Weight	237 g
Declaration of Conformity	EAC, CQC

Drawing



Drawing	Amp.	16			32		
		2 MB 32					
Dim. in mm	Poles	3	4	5	3	4	5
a		87	100	100	128	128	128
b		64	75	75	84	84	84
c		93	106	110	133	133	135
d		40	—	—	—	—	—
d1		—	10.5	10.5	11	11	11
e		50.5	59	59	68	68	68
f		4.5	5	5	5.3	5.3	5.3
g		4	4	4	4	4	4
h		122	133	135	169	169	170
M		20	20	20	32	32	32
M*		1x20 (blind) to be cut out			2x25 (blind) to be cut out		
Max. cable diam. (mm)		15	15	15	18/25	18/25	18/25
Terminal for cond. cross section (mm ²) min.-max.		1	1	1	2.5	2.5	2.5
		-2.5	-2.5	-2.5	-6	-6	-6