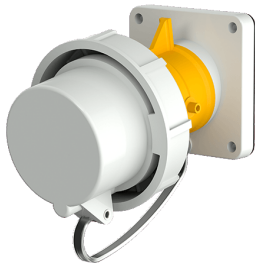


## Panel mounted inlet

Part no. 3530

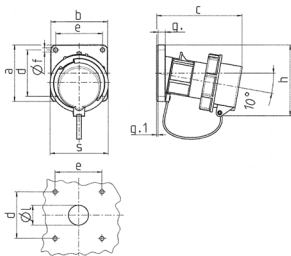


- screw terminals
- with protective cover

## Technical specifications

|                           |                 |
|---------------------------|-----------------|
| Ampere                    | 16 A            |
| Poles                     | 3 p             |
| Voltage                   | 110 V           |
| Clock position            | 4 h             |
| Hertz                     | 50-60 Hz        |
| Connection technology     | Screw terminals |
| Contact                   | standard        |
| Protection type           | IP 67           |
| Weight                    | 212 g           |
| Declaration of Conformity | EAC             |

## Drawing



| Drawing                              | Amp. | 16    |      |     | 32  |     |     | 63  |     |   |
|--------------------------------------|------|-------|------|-----|-----|-----|-----|-----|-----|---|
|                                      |      | Poles |      |     | 3   | 4   | 5   | 3   | 4   | 5 |
| 2 MB 62                              |      |       |      |     |     |     |     |     |     |   |
| Dim. in mm                           |      |       |      |     |     |     |     |     |     |   |
| a                                    |      | 85    | 85   | 85  | 85  | 85  | 108 | 108 | 108 |   |
| b                                    |      | 85    | 85   | 85  | 85  | 85  | 101 | 101 | 101 |   |
| c                                    |      | 132   | 132  | 131 | 131 | 137 | 164 | 164 | 164 |   |
| d                                    |      | 70    | 70   | 70  | 70  | 70  | 85  | 85  | 85  |   |
| e                                    |      | 70    | 70   | 70  | 70  | 70  | 77  | 77  | 77  |   |
| f                                    |      | 6.3   | 6.3  | 6.3 | 6.3 | 6.3 | 6.5 | 6.5 | 6.5 |   |
| g.                                   |      | 11    | 11   | 11  | 11  | 11  | 12  | 12  | 12  |   |
| g.1                                  |      | 2     | 2    | 2   | 2   | 2   | 2   | 2   | 2   |   |
| h                                    |      | 100   | 107  | 108 | 108 | 111 | 130 | 130 | 130 |   |
| s                                    |      | 70    | 87   | 94  | 94  | 102 | 114 | 114 | 114 |   |
| l                                    |      | 30    | 30   | 30  | 30  | 30  | 40  | 40  | 40  |   |
| Terminal for cond. cross             |      | 1     | 1    | 2,5 | 2,5 | 2,5 | 6   | 6   | 6   |   |
| section (mm <sup>2</sup> ) min.-max. |      | -2,5  | -2,5 | -6  | -6  | -6  | -16 | -16 | -16 |   |