

Panel mounted inlet

Part no. 3611

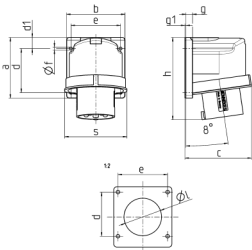


- screw terminals
- frame terminals
- angled 80°
- partially assembled

Technical specifications

Ampere	63 A
Poles	5 p
Voltage	400 V
Clock position	6 h
Hertz	50-60 Hz
Connection technology	Screw terminals
Contact	standard
Protection type	IP 67
Weight	694 g
Declaration of Conformity	EAC

Drawing



Drawing	Amp.	63
2 MB 230	Poles	5
Dim. in mm	a	110
	b	106
	c	121
	d	80
	d1	20
	e	90
	f	5.5
	g	12
	g1	2
	h	149
	l	68
	s	113