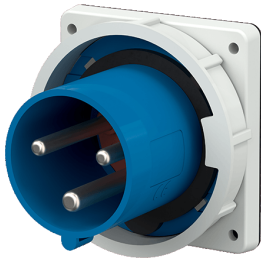


Panel mounted inlet

Part no. 3665

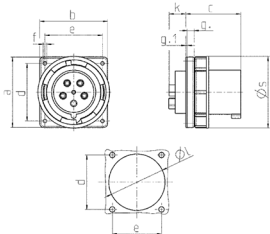


- screw terminals
- with highly heat resistant contact carrier
- nickel plated contacts

Technical specifications

Ampere	125 A
Poles	3 p
Voltage	230 V
Clock position	6 h
Hertz	50-60 Hz
Connection technology	Screw terminals
Contact	highly heat resistant contact carrier, nickel plated contacts
Protection type	IP 67
Weight	907 g
Declaration of Conformity	EAC, CQC

Drawing



Drawing 2 MB 166	Amp. Poles	63			125		
		3	4	5	3	4	5
Dim. in mm	a	110	110	110	130	130	130
	b	106	106	106	130	130	130
	c	86	86	86	112	112	112
	d	90	90	90	104	104	104
	e	90	90	90	104	104	104
	f	5.5	5.5	5.5	6.5	6.5	6.5
	g.	12	12	12	18	18	18
	g.1	2	2	2	2	2	2
	k	28	28	28	28	28	28
	l	88.5	88.5	88.5	95	95	95
	s	113	113	113	132	132	132
Terminal for cond. cross section (mm ²) min.-max.		6	6	6	25	25	25
		-16	-16	-16	-70	-70	-70