

## Wall mounted receptacle

Part no. 3719

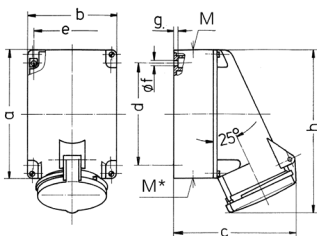


- screw terminals
- **X-CONTACT**
- internal fixing
- one cable entry at top and two blind entries (can be cut out) at the bottom
- enclosure base can be turned 180°

## Technical specifications

Ampere	63 A
Poles	5 p
Voltage	50-500 V
Clock position	1 h
Connection technology	Screw terminals
Contact	X-CONTACT®
Protection type	IP 44
Weight	925 g
Declaration of Conformity	VDE, EAC, CQC

## Drawing



Drawing	Amp.	63		
1 MB 213	Poles	3	4	5
Dim. in mm	a	170	170	170
	b	118	118	118
	c	164	164	164
	d	134.5	134.5	134.5
	e	103	103	103
	f	6.1	6.1	6.1
	g	6	6	6
	h	216	216	216
	M	40	40	40
	M*	2xM40 (blind) to be cut out		
	Max. cable diam. (mm)	32	32	32
	Terminal for cond. cross section (mm <sup>2</sup> ) min.-max.	6	6	6
		-25	-25	-25