

Panel mounted receptacle

Part no. 3787P

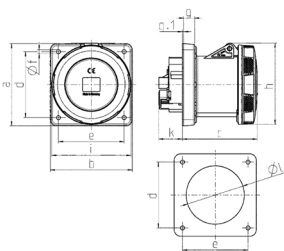


- screw terminals
- with pilot contact
- **X-CONTACT**
- highly heat resistant contact carrier
- straight

Technical specifications

Ampere	125 A
Poles	5 p
Voltage	600-690 V
Clock position	5 h
Hertz	50-60 Hz
Connection technology	Screw terminals
Contact	highly heat resistant contact carrier, X-CONTACT®
Protection type	IP 67
Flange	130x130 mm
Fixing hole	104x104 mm
Weight	1329 g
Declaration of Conformity	EAC

Drawing



Drawing 1 MB 258	Amp. Poles	125	
		4	5
Dim. in mm	a	130	130
	b	130	130
	c	119	119
	d	104	104
	e	104	104
	f	6.5	6.5
	g	18	18
	g.1	2	2
	h	129	129
	i	126	126
	k	43	43
	l	95	95
Terminal for cond. cross section (mm ²) min.-max.		25	25
		-70	-70