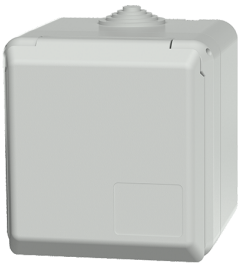


Cepex wall mounted receptacle

Part no. 4110

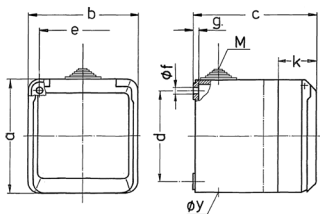


- screw terminals
- meeting DIN 18032 standards for ball rebound

Technical specifications

Ampere	32 A
Poles	5 p
Voltage	400 V
Clock position	6 h
Hertz	50-60 Hz
Protection type	IP 44
Shutter	false
Weight	405 g
Declaration of Conformity	VDE, EAC, CQC

Drawing



Drawing 1 MB 312	Amp. Poles	16			32		
		3	4	5	3	4	5
Dim. in mm	a	93	93	93	93	93	93
	b	90	90	90	90	90	90
	c	87	87	87	99	99	99
	d	75	75	75	75	75	75
	e	73	73	73	73	73	73
	f	5.5	5.5	5.5	5.5	5.5	5.5
	g	4.2	4.2	4.2	4.2	4.2	4.2
	k	33	33	33	33	33	33
	y	25.5	25.5	25.5	25.5	25.5	25.5
	M	25x1.5	25x1.5	25x1.5	25x1.5	25x1.5	25x1.5
	Terminal for cond. cross section (mm ²) min.-max.	1.5	1.5	1.5	2.5	2.5	2.5
		-4	-4	-4	-6	-6	-6