

Cepex panel mounted receptacle

Part no. 4120

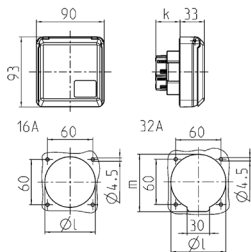


- screw terminals
- also suitable for installation in cable ducts and columns
- meeting DIN 18032 standards for ball rebound

Technical specifications

Ampere	32 A
Poles	5 p
Voltage	400 V
Clock position	6 h
Hertz	50-60 Hz
Protection type	IP 44
Shutter	false
Weight	257 g
Declaration of Conformity	VDE, EAC, CQC

Drawing



Drawing	Amp.	16			32		
		3	4	5	3	4	5
1 MB 315	Poles						
Dim. in mm	k	32	32	32	48	48	48
	l	50	60	67	65	65	73
	m	-	-	-	70	70	76
Terminal for cond. cross		1.5	1.5	1.5	2.5	2.5	2.5
section (mm ²) min.-max.		-4	-4	-4	-6	-6	-6