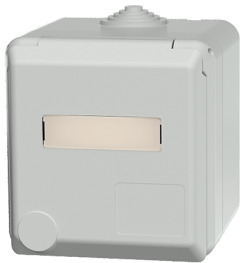


## Cepex wall mounted receptacle

Part no. 4135



- screw terminals
- with labelling field

## Technical specifications

|                           |               |
|---------------------------|---------------|
| Ampere                    | 16 A          |
| Poles                     | 5 p           |
| Voltage                   | 400 V         |
| Clock position            | 6 h           |
| Hertz                     | 50-60 Hz      |
| Protection type           | IP 44         |
| Shutter                   | false         |
| Weight                    | 310 g         |
| Declaration of Conformity | VDE, EAC, CQC |

## Drawing

| Drawing<br>1 MB 317 | Amp.<br>Poles   | 16     |        |        | 32     |        |        |
|---------------------|---|--------|--------|--------|--------|--------|--------|
|                     |   | 3      | 4      | 5      | 3      | 4      | 5      |
| Dim. in mm          | a   | 93     | 93     | 93     | 93     | 93     | 93     |
|                     | b   | 90     | 90     | 90     | 90     | 90     | 90     |
|                     | c   | 88     | 88     | 88     | 100    | 100    | 100    |
|                     | d   | 75     | 75     | 75     | 75     | 75     | 75     |
|                     | e   | 73     | 73     | 73     | 73     | 73     | 73     |
|                     | f   | 5.5    | 5.5    | 5.5    | 5.5    | 5.5    | 5.5    |
|                     | g   | 4.2    | 4.2    | 4.2    | 4.2    | 4.2    | 4.2    |
|                     | k   | 34     | 34     | 34     | 34     | 34     | 34     |
|                     | y   | 25.5   | 25.5   | 25.5   | 25.5   | 25.5   | 25.5   |
|                     | M   | 25x1.5 | 25x1.5 | 25x1.5 | 25x1.5 | 25x1.5 | 25x1.5 |
|                     | Terminal for cond. cross section (mm <sup>2</sup> ) min.-max. | 1.5    | 1.5    | 1.5    | 2.5    | 2.5    | 2.5    |
|                     |   | -4     | -4     | -4     | -6     | -6     | -6     |