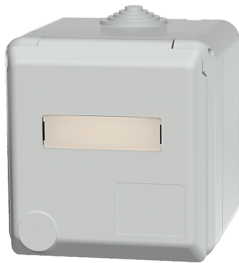


Cepex wall mounted receptacle

Part no. 4138



- screw terminals with labelling field

Technical specifications

| | |
|---------------------------|----------|
| Ampere | 32 A |
| Poles | 4 p |
| Voltage | 400 V |
| Clock position | 6 h |
| Hertz | 50-60 Hz |
| Protection type | IP 44 |
| Shutter | false |
| Weight | 385 g |
| Declaration of Conformity | EAC, CQC |

Drawing

| Drawing 1 MB 317 | Amp. Poles | 16 | | | 32 | | |
|---------------------|---|--------|--------|--------|--------|--------|--------|
| | | 3 | 4 | 5 | 3 | 4 | 5 |
| Dim. in mm | a | 93 | 93 | 93 | 93 | 93 | 93 |
| | b | 90 | 90 | 90 | 90 | 90 | 90 |
| | c | 88 | 88 | 88 | 100 | 100 | 100 |
| | d | 75 | 75 | 75 | 75 | 75 | 75 |
| | e | 73 | 73 | 73 | 73 | 73 | 73 |
| | f | 5.5 | 5.5 | 5.5 | 5.5 | 5.5 | 5.5 |
| | g | 4.2 | 4.2 | 4.2 | 4.2 | 4.2 | 4.2 |
| | k | 34 | 34 | 34 | 34 | 34 | 34 |
| | y | 25.5 | 25.5 | 25.5 | 25.5 | 25.5 | 25.5 |
| | M | 25x1.5 | 25x1.5 | 25x1.5 | 25x1.5 | 25x1.5 | 25x1.5 |
| | Terminal for cond. cross section (mm ²) min.-max. | 1.5 | 1.5 | 1.5 | 2.5 | 2.5 | 2.5 |
| | | -4 | -4 | -4 | -6 | -6 | -6 |