

## Cepex enclosure

Part no. 4377

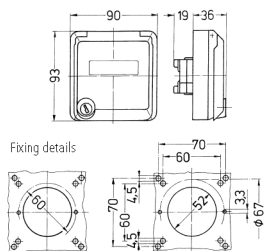


- grey
- as panel mounted receptacle
- for installation of RJ45 data port receptacles
- for Reichle + De-Massari type module real 10, also suited for data modules of Telegärtner (AMJ/UMJ cat.6+, Setec (XKJ), Corning (FutureCOM S10TENE Keystone), Dätwyler (KS-T6A, MS-K, PS-GG45), Rutenbeck (UM real cat.6a, A), LEONI MegaLine, (Keystone)
- with labelling field
- 2 keys
- with identical locks: part no + index G

## Technical specifications

Protection type	IP 44
Shutter	false
Weight	260 g
Declaration of Conformity	EAC

## Drawing



Drawing  
1 MB 305  
Dim. in mm