

Panel mounted inlet

Part no. 468

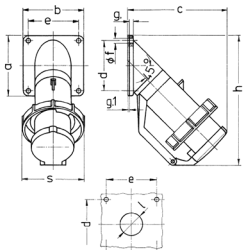


- screw terminals
- with hinged lid

Technical specifications

Ampere	32 A
Poles	4 p
Voltage	400 V
Clock position	6 h
Hertz	50-60 Hz
Connection technology	Screw terminals
Contact	standard
Protection type	IP 67
Weight	363 g
Declaration of Conformity	EAC

Drawing



Drawing Z MB 40	Amp. Poles	16				32		63	
		5	3	4	5	4	5		
Dim. in mm	a	85	85	85	85	114	114	114	114
	b	85	85	85	85	114	114	114	114
	c	141	141	141	144	180	180	180	180
	d	70	70	70	70	90	90	90	90
	e	70	70	70	70	90	90	90	90
	f	6.2	6.2	6.2	6.2	6.2	6.2	6.2	6.2
	g	6	6	6	6	6	6	6	6
	g.1	2	2	2	2	2	2	2	2
	h	181	181	181	188	242	242	242	242
	s	86	93	93	100	113	113	113	113
	l	30	30	30	30	40	40	40	40
Terminal for cond. cross section (mm ²) min.-max.	1	2.5	2.5	2.5	2.5	4	4	4	4
		-2.5	-6	-6	-6	-16	-16	-16	-16