

Panel mounted inlet

Part no. 474

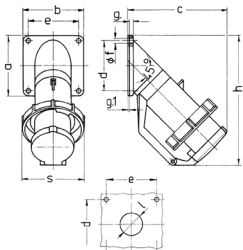


- screw terminals
- with hinged lid

Technical specifications

Ampere	32 A
Poles	5 p
Voltage	400 V
Clock position	6 h
Hertz	50-60 Hz
Connection technology	Screw terminals
Contact	standard
Protection type	IP 67
Weight	434 g
Declaration of Conformity	EAC

Drawing



Drawing	Amp.	16				32		63	
		Poles		3	4	5	4	5	
2 MB 40		5							
Dim. in mm									
a		85	85	85	85	114	114		
b		85	85	85	85	114	114		
c		141	141	141	144	180	180		
d		70	70	70	70	90	90		
e		70	70	70	70	90	90		
f		6.2	6.2	6.2	6.2	6.2	6.2		
g		6	6	6	6	6	6		
g.1		2	2	2	2	2	2		
h		181	181	181	188	242	242		
s		86	93	93	100	113	113		
l		30	30	30	30	40	40		
Terminal for cond. cross section (mm ²) min.-max.		1	2.5	2.5	2.5	4	4		
		-2.5	-6	-6	-6	-16	-16		