

## Panel mounted inlet

Part no. 477

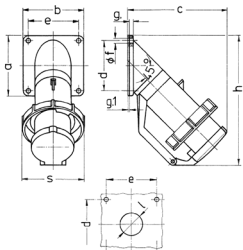


- screw terminals
- with hinged lid

## Technical specifications

Ampere	63 A
Poles	4 p
Voltage	400 V
Clock position	6 h
Hertz	50-60 Hz
Connection technology	Screw terminals
Contact	standard
Protection type	IP 67
Weight	748 g
Declaration of Conformity	EAC

## Drawing



Drawing	Amp.	16				32		63	
		Z MB 40		Poles		3	4	5	4
Dim. in mm		5	3	4	5	4	5	4	5
a	85	85	85	85	85	114	114	114	114
b	85	85	85	85	85	114	114	114	114
c	141	141	141	144	144	180	180	180	180
d	70	70	70	70	70	90	90	90	90
e	70	70	70	70	70	90	90	90	90
f	6.2	6.2	6.2	6.2	6.2	6.2	6.2	6.2	6.2
g	6	6	6	6	6	6	6	6	6
g.1	2	2	2	2	2	2	2	2	2
h	181	181	181	188	188	242	242	242	242
s	86	93	93	100	100	113	113	113	113
l	30	30	30	30	30	40	40	40	40
Terminal for cond. cross section (mm <sup>2</sup> ) min.-max.	1	2.5	2.5	2.5	2.5	4	4	4	4
		-2.5	-6	-6	-6	-16	-16	-16	-16