

Cepex grounding-type panel mounted receptacle

Part no. 4904

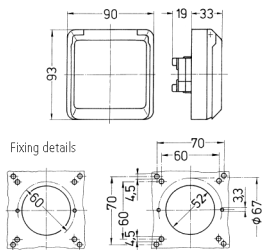


- french-belgian standard
- screw terminals
- for installation in cable ducts and collumns
- meeting DIN 18032 standards for ball rebound

Technical specifications

Ampere	16 A
Poles	2 p+E
Voltage	230 V
Hertz	50-60 Hz
Protection type	IP 44
Shutter	true
Weight	140 g
Declaration of Conformity	EAC

Drawing



Drawing
1 MB 304
Dim. in mm