

Cepex panel mounted receptacle SCHUKO®

Part no. 4979

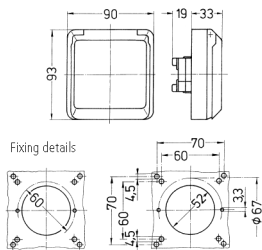


- alpine white or pearl white
- screw terminals
- suitable for installation in cable ducts and columns
- meeting DIN 18032 standards for ball rebound

Technical specifications

Ampere	16 A
Poles	3 p+E
Voltage	230 V
Hertz	50-60 Hz
Protection type	IP 44
Shutter	false
Weight	137 g
Declaration of Conformity	EAC

Drawing



Drawing
1 MB 304

Dim. in mm