

Wall mounted receptacle

Part no. 5946A

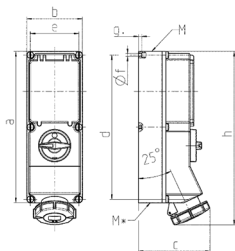


- screw terminals
- highly heat resistant contact carrier
- nickel plated contacts
- switched
- mechanical DUO-interlock
- DIN rail
- receptacles can be padlocked

Technical specifications

Ampere	32 A
Poles	4 p
Voltage	400-440 V
Clock position	3 h
Hertz	50-60 Hz
Connection technology	Screw terminals
Contact	nickel plated contacts, highly heat resistant contact carrier
Protection type	IP 67
Enclosure material	Plastic
Weight	2102 g
Declaration of Conformity	EAC, CQC

Drawing



Drawing 1 MB 181	Amp. Poles	16			32	
		3	4	5	4	5
Dim. in mm	a	364	364	364	364	364
	b	134	134	134	134	134
	c	160	162	163	168	168
	d	347	347	347	347	347
	e	117	117	117	117	117
	f	6.3	6.3	6.3	6.3	6.3
	g	8	8	8	8	8
	h	391	395	398	408	411
	M	32/40	32/40	32/40	32/40	32/40
	M*	2x32	2x32	2x32	2x32	2x32
	Max. cable diam. (mm)	27	27	27	27	27
	Terminal for cond. cross section (mm ²) min.-max.	1.5	1.5	1.5	2.5	2.5
		-4	-4	-4	-10	-10