

Panel mounted receptacle

Part no. 739

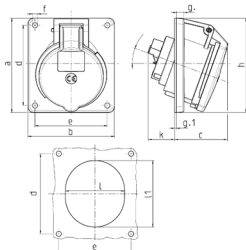


- screw terminals
- highly heat resistant contact carrier
- nickel plated contacts
- 20° inclination
- receptacles optional fitted with auxiliary contact

Technical specifications

Ampere	32 A
Poles	7 p
Voltage	230 V
Clock position	9 h
Hertz	50-60 Hz
Connection technology	Screw terminals
Contact	highly heat resistant contact carrier, nickel plated contacts
Protection type	IP 44
Flange	100x92 mm
Fixing hole	85x77 mm
Inclination	20 °
Weight	300 g
Declaration of Conformity	EAC, CQC

Drawing



Drawing 1 MB 260 Dim. in mm	Amp. Poles	16		32	
		7	7	7	7
a		100	100		
b		92	92		
c		58	61		
d		85	85		
e		77	77		
f		5.5	5.5		
g		8	8		
g-1		2	2		
h		100	106		
k		40	55		
l		65	72		
l1		72	85		
α		20°	20°		
Terminal for cond. cross section (mm²) min.-max.		1.5 —4	2.5 —10		