

Wall mounted receptacle

Part no. 75121

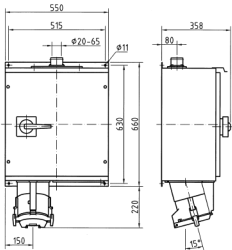


- screw terminals
- switched
- mechanical interlock
- cable entry bushing for cables of up to 65 mm at top and blind flange at bottom
- enclosure made of sheet steel, painted in RAL 1021
- seawater resistant products are available on request

Technical specifications

Ampere	250 A
Poles	5 p
Voltage	400 V
Clock position	6 h
Hertz	50-60 Hz
Connection technology	Screw terminals
Contact	standard
Protection type	IP 55
Weight	35000 g
Declaration of Conformity	EAC

Drawing



Drawing
1 MB 403/2
Dim. in mm