

## Panel mounted inlet

Part no. 75311

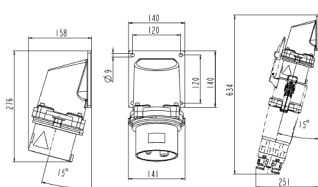


- screw terminals
- 15° inclination
- seawater resistant products are available on request

## Technical specifications

Ampere	200 A
Poles	4 p
Voltage	400 V
Clock position	6 h
Hertz	50-60 Hz
Connection technology	Screw terminals
Contact	standard
Protection type	IP 67
Weight	3400 g

## Drawing



Drawing  
2 MB 247

Dim. in mm