

## Wall mounted inlet

Part no. 844

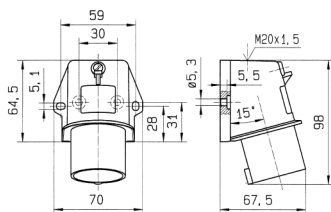


- screw terminals
- for internal or external fixing
- for hinged lids for retrofit see accessories

## Technical specifications

|                           |                 |
|---------------------------|-----------------|
| Ampere                    | 16 A            |
| Poles                     | 3 p             |
| Voltage                   | 230 V           |
| Clock position            | 6 h             |
| Hertz                     | 50-60 Hz        |
| Connection technology     | Screw terminals |
| Contact                   | standard        |
| Protection type           | IP 44           |
| Weight                    | 116 g           |
| Declaration of Conformity | VDE, EAC        |

## Drawing



Drawing  
2 MB 213  
Dim. in mm