

Panel mounted receptacle

Part no. 857

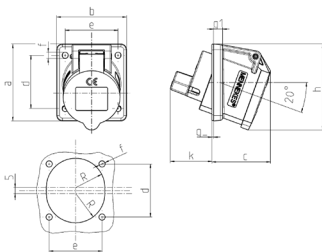


- screw terminals
- small flange dimensions
- 20° inclination

Technical specifications

Ampere	16 A
Poles	3 p
Voltage	230 V
Clock position	6 h
Hertz	50-60 Hz
Connection technology	Screw terminals
Contact	standard
Protection type	IP 44
Flange	68x62 mm
Fixing hole	47x47 mm
Inclination	20 °
Weight	122 g
Declaration of Conformity	VDE

Drawing



Drawing	Amp.	16
1 MB 472	Poles	3
Dim. in mm	a	68
	b	62
	c	52
	d	47
	e	47
	f	5.5
	g.	8
	g.1	1.5
	h	76
	k	37
Terminal for cond. cross section (mm ²) min.-max.		1.5 —4