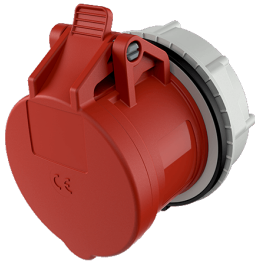


Panel mounted receptacle RAPIDO® with TwinCONTACT

Part no. 907

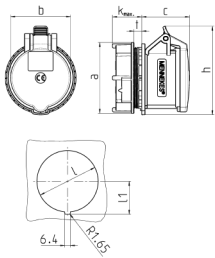


- screwless spring terminals
- suitable for through wiring
- for wall apertures 70 mm diameter
- central fixing

Technical specifications

Ampere	16 A
Poles	5 p
Voltage	400 V
Clock position	6 h
Hertz	50-60 Hz
Connection technology	Screwless - TwinCONTACT
Contact	standard
Protection type	IP 44
Weight	187 g
Declaration of Conformity	VDE, EAC, CQC

Drawing



Drawing 1 MB 468	Amp. Poles	16		32		
		4	5	3	4	5
Dim. in mm	a	81	81	81	81	81
	b	66	69	71	71	80
	c	58	55	66	66	64
	k	max. 33	max. 33	max. 33	max. 33	max. 33
	h	100	102	101	101	108
	l	70	70	70	70	70
	l1	37.75	37.75	37.75	37.75	37.75
	t	2.9	2.9	2.9	2.9	2.9
Terminal for cond. cross		1.5	1.5	2.5	2.5	2.5
section (mm ²) min.-max.		—4	—4	—6	—6	—6