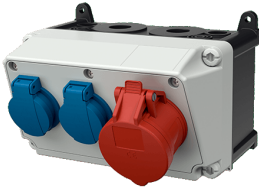


AMAXX® receptacle combination

Part no. 910007

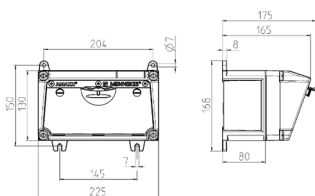


- pre-wired for installation
- enclosure and insert made of AMAPLAST

Technical specifications

| | |
|---------------------------|--|
| CEE 16 A, 5 p, 400 V | 1 |
| SCHUKO® 16 A, 230 V | 2 |
| Pre-fuse max. | 16 A |
| InA | 16 A |
| RDF | 1 |
| Connection / feeder cable | • for 1 cable up to 5 x 10 mm ² |
| Protection type | IP 44 |
| Shutter | false |
| Enclosure material | Plastic |
| Weight | 1480 g |
| Height | 130 mm |
| Width | 225 mm |
| Declaration of Conformity | EAC |

Drawing



Drawing 1 MB 531

Depth dimensions at various fittings.

| Receptacles | Degrees | Depth |
|--------------------|---------|--------|
| SCHUKO® 16A, 230 V | IP 44 | 175 mm |
| | IP 67 | 194 mm |
| CEE 16A, 3p, 230V | IP 44 | 204 mm |
| | IP 67 | 205 mm |
| CEE 16A, 5p, 400V | IP 44 | 209 mm |
| | IP 67 | 213 mm |
| CEE 32A, 5p, 400V | IP 44 | 221 mm |
| | IP 67 | 227 mm |
| CEE 63A, 5p, 400V | IP 44 | 248 mm |
| | IP 67 | 248 mm |

Cable entries: closed for cut out. 2 x M 25 each on top and bottom, 2 x M 20 each on top and bottom for cut out.