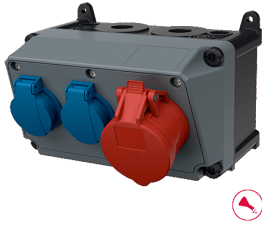


## AMAXX® receptacle combination

Part no. 910020

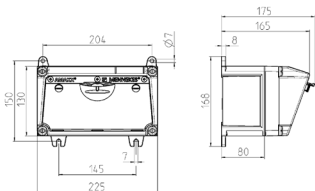


- [highly resistant to chemicals](#)
- with highly heat resistant contact carrier and nickel plated contacts
- pre-wired for installation
- enclosure front cover grey RAL 7000

### Technical specifications

CEE 16 A, 5 p, 400 V	1
SCHUKO® 16 A, 230 V	2
Connection / feeder cable	• for 1 cable up to 5 x 10 mm <sup>2</sup>
Protection type	IP 44
Shutter	false
Enclosure material	Plastic, high resistance to chemicals
Weight	2160 g
Height	130 mm
Width	225 mm

### Drawing



Drawing 1 MB 531

Depth dimensions at various fittings.

Receptacles	Degrees	Depth
SCHUKO® 16A, 230 V	IP 44	175 mm
	IP 67	194 mm
CEE 16A, 3p, 230V	IP 44	204 mm
	IP 67	205 mm
CEE 16A, 5p, 400V	IP 44	209 mm
	IP 67	213 mm
CEE 32A, 5p, 400V	IP 44	221 mm
	IP 67	227 mm
CEE 63A, 5p, 400V	IP 44	248 mm
	IP 67	248 mm

Cable entries: closed for cut out. 2 x M 25 each on top and bottom, 2 x M 20 each on top and bottom for cut out.