

## Panel mounted receptacle CEEplus

Part no. 927

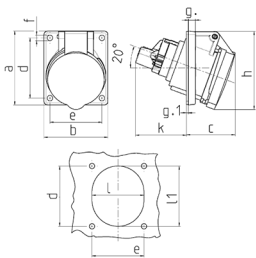


- screw terminals
- with 4 additional contacts
- 20° inclination

### Technical specifications

Ampere	16 A
Poles	3 p+a
Voltage	230 V
Clock position	6 h
Hertz	50-60 Hz
Connection technology	Screw terminals
Contact	standard
Protection type	IP 44
Flange	62x62 mm
Fixing hole	47x47 mm
Inclination	20 °
Weight	168 g
Declaration of Conformity	EAC

### Drawing



Drawing 1 MB 459/453	Amp.		
	Poles	16	
	3	5	
Dim. in mm	a	73.5	85
	b	64	85
	c	52	57
	d	60	70
	e	52	70
	f	5.3	5.5
	g	7	8
	g.1	2	2
	h	79	101
	k	51	33
	l	52	70
	l1	60	78
	a	20°	20°
Terminal for cond. cross section (mm²) min.-max.		1.5	1.5
		-4	-4