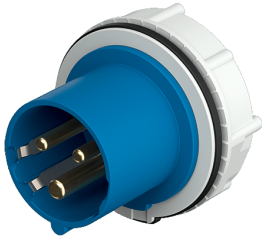


## Panel mounted inlets RAPIDO® CEEplus

Part no. 957

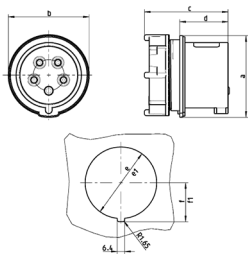


- screw terminals
- with 4 additional contacts
- straight
- central fixing 61 mm Ø

### Technical specifications

Ampere	16 A
Poles	3 p+a
Voltage	230 V
Clock position	6 h
Hertz	50-60 Hz
Connection technology	Screw terminals
Contact	standard
Protection type	IP 44
Weight	132 g
Declaration of Conformity	EAC

### Drawing



Drawing	Amp.	16	
		3	5
2 MB 220/216	Poles		
Dim. in mm	a	70	70
	b	69	69
	c	max.73	max.72
	d	44	44
	e	Ø61	Ø61
	f	33.25	33.25
	e1	—	—
	f1	—	—
	Terminal for cond. cross	1	1
	section (mm²) min.-max.	—2.5	—2.5