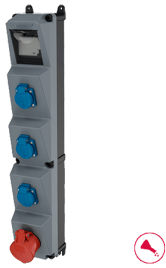


## AMAXX® s receptacle combination

Part no. 960042

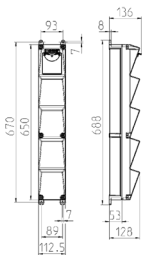


- highly resistant to chemicals
- with highly heat resistant contact carrier and nickel plated contacts
- pre-wired for installation
- enclosure front cover grey RAL 7000
- hinged to the side
- fusing behind a transparent cover

### Technical specifications

CEE 16 A, 5 p, 400 V	1
French/Belgian standard	3
Fusing	• 1 RCD 40A, 4 p, 0.03 A
Pre-fuse max.	16 A
InA	16 A
Connection / feeder cable	• for 1 cable up to 5 x 10 mm <sup>2</sup>
Protection type	IP 44
Shutter	false
Enclosure material	Plastic, high resistance to chemicals
Weight	2616 g
Height	650 mm
Width	113 mm

### Drawing



Drawing 1 MB 541

Depth dimensions at various fittings.

Receptacles	Degrees	Depth
SCHUKO® 16A, 230 V	IP 44	140 mm
	IP 67	157 mm
CEE 16A, 3p, 230V	IP 44	170 mm
	IP 67	169 mm
CEE 16A, 5p, 400V	IP 44	172 mm
	IP 67	174 mm
CEE 32A, 5p, 400V	IP 44	182 mm
	IP 67	188 mm

Cable entries: closed for cut out. 1 x M 25 on top and 1 x M 25 on bottom or 1 x M 32 on top and 1 x M 32 on bottom, additionally: 1 x M 20 on top and bottom to cut out.