

## Panel mounted receptacle CEEplus

Part no. 961

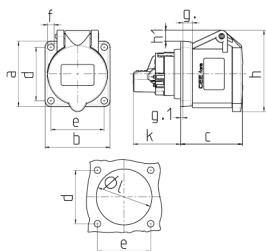


- screw terminals
- with 4 additional contacts
- straight

## Technical specifications

Ampere	16 A
Poles	5 p+a
Voltage	400 V
Clock position	6 h
Hertz	50-60 Hz
Connection technology	Screw terminals
Contact	standard
Protection type	IP 44
Flange	75x75 mm
Fixing hole	60x60 mm
Weight	163 g
Declaration of Conformity	EAC

## Drawing



Drawing 1 MB 460/247	Amp. Poles	16	
		3	5
Dim. in mm	a	55	75
	b	55	75
	c	54	55
	d	45	60
	e	45	60
	f	5.5	5.5
	g	8	8
	g.1	2	2
	h	70	83
	h1	10	8
	k	40.5	32
	l	47	54
Terminal for cond. cross section (mm <sup>2</sup> ) min.-max.		1.5	1.5
		-4	-4