

Wall mounted receptacle with TwinCONTACT

Part no. 1759

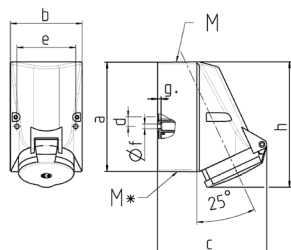


- screwless spring terminals
- suitable for through wiring
- internal fixing
- enclosure base can be turned 180°
- receptacles are designed for adding an auxiliary contact switch

Technical specifications

Ampere	16 A
Poles	5 p
Voltage	500-50 V
Clock position	2 h
Hertz	500-300 Hz
Connection technology	Screwless - TwinCONTACT
Contact	standard
Protection type	IP44
Weight	280 g

Drawing



Drawing 1 MB 43	Amp. Poles	16		32		
		4	5	3	4	5
Dim. in mm	a	128	128	128	128	128
	b	84	84	84	84	84
	c	122	124	136	136	138
	d	11	11	11	11	11
	e	68	68	68	68	68
	f	5.3	5.3	5.3	5.3	5.3
	g	4	4	4	4	4
	h	144	145	158	158	160
	M	25	25	32	32	32
	M*	2x25 (blind) to be cut out		2x25 (blind) to be cut out		
	Max. cable diam. (mm)	18	18	18/25	18/25	18/25
	Terminal for cond. cross section (mm ²) min.-max.	1.5	1.5	2.5	2.5	2.5
		-4	-4	-10	-10	-10