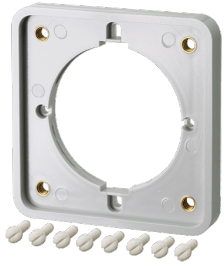


Flange

Part no. 40102

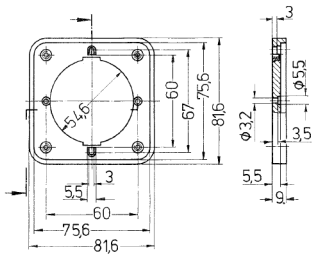


- for panel mounted receptacles: product group 1056 (screw terminals): all 16 A, 3 p to 5 p as well as 32 A, 5 p in special form (comp. type 1276) product group 1134 (screwless, TwinCONTACT): all 16 A, 3 p to 5 p

Technical specifications

Weight	29 g
--------	------

Drawing



Drawing
1 MB 227

Dim. in mm