

EverGUM receptacle combination

Part no. 7513001

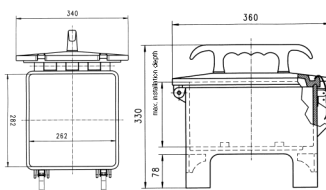


- distributor compact
- portable, stackable
- with hinged cover
- with two stainless steel quick release

Technical specifications

CEE 63 A, 5 p, 400 V	1
CEE 32 A, 5 p, 400 V	1
CEE 16 A, 5 p, 400 V	1
SCHUKO®	4
Fusing	<ul style="list-style-type: none"> • 1 RCD 63 A, 4 p, 0.03 A • 1 MCB 32 A, 3 p, C • 1 MCB 16 A, 3 p, C • 2 MCB's 16 A, 1 p, C
Connection / feeder cable	<ul style="list-style-type: none"> • 2 m H07RN-F5G10 with CEE-plug 63 A, 5 p, 400 V
Protection type	IP44
Shutter	false
Maximum current load	32 A permissible total current
Enclosure material	Solid rubber
Weight	14445 g
Length	360 mm
Height	330 mm
Width	340 mm

Drawing



Drawing
5 MB 43

Dim. in mm