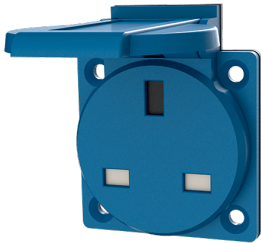


## Grounding-type panel mounted receptacle

Part no. 10718

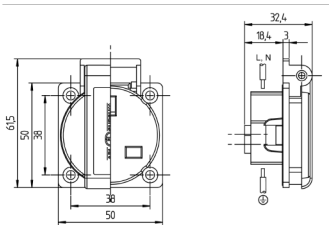


- British standard
- with hinged lid
- 3 screw terminals
- receptacle cannot be combined with enclosure base part no. 10714, 10715 or 10716

## Technical specifications

|                       |                 |
|-----------------------|-----------------|
| Ampere                | 13 A            |
| Poles                 | 2 p+PE          |
| Voltage               | 230 V           |
| Connection technology | Screw terminals |
| Contact               | standard        |
| Protection type       | IP44            |
| Shutter               | true            |
| Flange                | 50x50 mm        |
| Fixing hole           | 38x38 mm        |
| Weight                | 80 g            |

## Drawing



Drawing  
1 MB 584  
Dim. in mm