

**Panel mounted receptacle SCHUKO®**

Part no. 11080

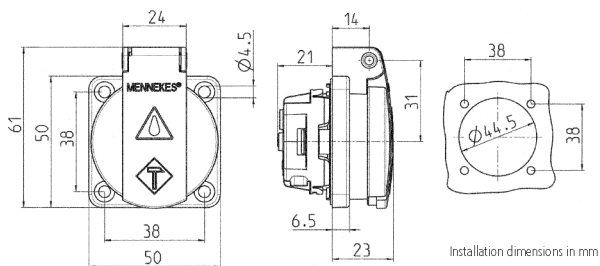


- with hinged lid
- 3 screw terminals as connecting terminals for 1.5 – 2.5 mm<sup>2</sup>
- other colours on request

**Technical specifications**

|                       |                 |
|-----------------------|-----------------|
| Ampere                | 16 A            |
| Poles                 | 2 p+PE          |
| Voltage               | 230 V           |
| Connection technology | Screw terminals |
| Contact               | standard        |
| Protection type       | IP54            |
| Shutter               | true            |
| Flange                | 50x50 mm        |
| Fixing hole           | 38x38 mm        |
| Enclosure material    | Plastic         |
| Weight                | 40 g            |
| Certifications        | VDE             |

**Drawing**



Drawing  
1 MB 410

Dim. in mm