

## Wall mounted Inlet

Part no. 21369

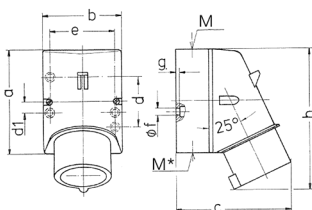


- screw terminals
- highly heat resistant contact carrier
- nickel plated contacts
- cable entry also possible on the back side
- enclosure base with stamped recess for quick cutting out

## Technical specifications

Ampere	32 A
Poles	5 p
Voltage	400 V
Clock position	6 h
Hertz	50-60 Hz
Connection technology	Screw terminals
Contact	nickel plated contacts, highly heat resistant contact carrier
Protection type	IP 44
Weight	365 g
Declaration of Conformity	DE,VDE, CN,CQC

## Drawing



Drawing	Amp.	16			32		
		Poles			Poles		
2 MB 32		3	4	5	3	4	5
Dim. in mm	a	87	100	100	128	128	128
	b	64	75	75	84	84	84
	c	93	106	110	133	133	135
	d	40	—	—	—	—	—
	d1	—	10.5	10.5	11	11	11
	e	50.5	59	59	68	68	68
	f	4.5	5	5	5.3	5.3	5.3
	g	4	4	4	4	4	4
	h	122	133	135	169	169	170
	M	20	20	20	32	32	32
	M*	1x20 (blind) to be cut out			2x25 (blind) to be cut out		
Max. cable diam. (mm)		15	15	15	18/25	18/25	18/25
Terminal for cond. cross section (mm <sup>2</sup> ) min.-max.		1	1	1	2.5	2.5	2.5
		-2.5	-2.5	-2.5	-6	-6	-6