

## Wall mounted receptacle

Part no. 22356

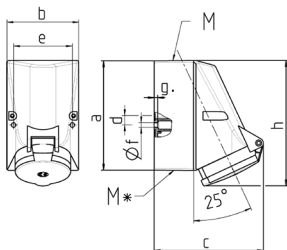


- highly heat resistant contact carrier
- nickel plated contacts
- internal fixing
- one cable entry at top and two blind cable entries (can be cut out) at bottom
- enclosure base can be turned 180°
- 63 A is not standardized

## Technical specifications

Ampere	63 A
Poles	3 p
Voltage	20-25, 40-50 V
Clock position	4 h
Hertz	100-200 Hz
Connection technology	Screw terminals
Contact	highly heat resistant contact carrier, nickel plated contacts
Protection type	IP 44
Weight	914 g
Declaration of Conformity	CN,CQC

## Drawing



Drawing 1 MB 43	Amp. Poles	63	
		2	3
Dim. in mm	a	128	128
	b	84	84
	c	136	136
	d	11	11
	e	68	68
	f	5.3	5.3
	g	4	4
	h	158	158
	M	32	32
	M*	2x25 (blind) to be cut out	
	Max. cable diam. (mm)	18/25	18/25
Terminal for cond. cross section (mm²) min.-max.	2.5	2.5	
	-10	-10	