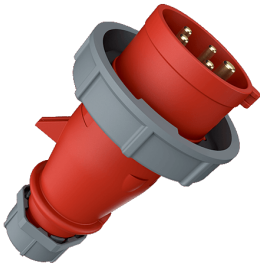


## Plug AM-TOP®

Part no. 300



- screw terminals
- single part body
- cable gland and sealing
- strain relief and protection against kinking

## Technical specifications

|                           |                  |
|---------------------------|------------------|
| Ampere                    | 32 A             |
| Poles                     | 5 p              |
| Voltage                   | 400 V            |
| Clock position            | 6 h              |
| Hertz                     | 50-60 Hz         |
| Connection technology     | Screw terminals  |
| Contact                   | standard         |
| Protection type           | IP 67            |
| Weight                    | 329 g            |
| Declaration of Conformity | DE, VDE, CN, CQC |

## Drawing



| Drawing<br>2 MB 218 | Amp.<br>Poles                        | 16   |      |      | 32  |     |     |
|---------------------|--------------------------------------|------|------|------|-----|-----|-----|
|                     |                                      | 3    | 4    | 5    | 3   | 4   | 5   |
| Dim. in mm          | a                                    | 142  | 144  | 147  | 186 | 186 | 180 |
|                     | b                                    | 70   | 78   | 87   | 94  | 94  | 101 |
|                     | n                                    | 109  | 111  | 114  | 145 | 145 | 138 |
|                     | y                                    | 14.5 | 16   | 16   | 22  | 22  | 22  |
|                     | Terminal for cond. cross             | 1    | 1    | 1    | 2.5 | 2.5 | 2.5 |
|                     | section (mm <sup>2</sup> ) min.-max. | -2.5 | -2.5 | -2.5 | -6  | -6  | -6  |