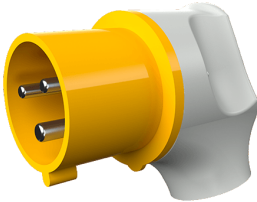


**Angled plug**  
Part no. 3312

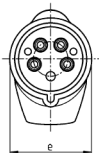
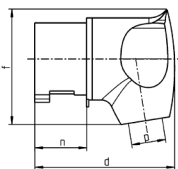


- screw terminals
- nickel plated contacts
- with grommet
- especially suited for use with receptacles of the Cepex range

**Technical specifications**

Ampere	32 A
Poles	3 p
Voltage	110 V
Clock position	4 h
Hertz	50-60 Hz
Connection technology	Screw terminals
Contact	nickel plated contacts
Protection type	IP 44
Weight	213 g

**Drawing**



2 MB 251	Amp.	32		
		Poles		
Dim. in mm		3	4	5
	d		115	115
e		72	72	72
f		96	96	100
n		45.8	45.8	45.8
p		11/22	11/22	11/22