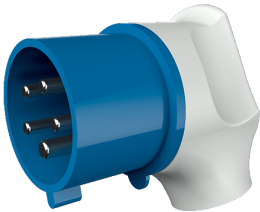


Angled plug
Part no. 3424

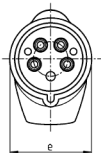
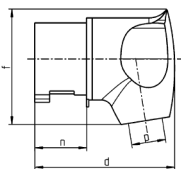


- screw terminals
- nickel plated contacts
- with grommet
- especially suited for use with receptacles of the Cepex range

Technical specifications

Ampere	32 A
Poles	5 p
Voltage	230 V
Clock position	9 h
Hertz	50-60 Hz
Connection technology	Screw terminals
Contact	nickel plated contacts
Protection type	IP 44
Weight	260 g

Drawing



2 MB 251	Amp.	32		
		Poles	3	4
Dim. in mm	d	115	115	115
	e	72	72	72
	f	96	96	100
	n	45.8	45.8	45.8
	p	11/22	11/22	11/22