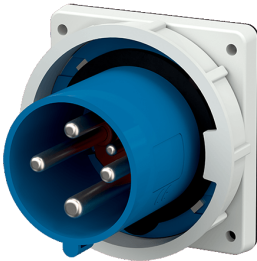


Panel mounted inlet

Part no. 3704

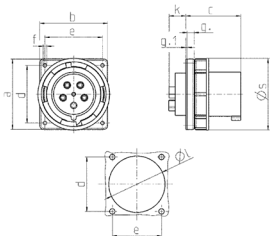


- screw terminals
- with highly heat resistant contact carrier
- nickel plated contacts
- a retaining nose to hold the hinged lid of the connector must be provided by the customer in order to ensure satisfactory locking

Technical specifications

| | |
|---------------------------|---|
| Ampere | 63 A |
| Poles | 4 p |
| Voltage | 230 V |
| Clock position | 9 h |
| Hertz | 50-60 Hz |
| Connection technology | Screw terminals |
| Contact | highly heat resistant contact carrier, nickel plated contacts |
| Protection type | IP 67 |
| Weight | 531 g |
| Declaration of Conformity | DE,VDE, CN,CQC |

Drawing



| Drawing 2 MB 166 | Amp. Poles | 63 | | | 125 | | |
|--|---------------|------|------|------|-----|-----|-----|
| | | 3 | 4 | 5 | 3 | 4 | 5 |
| Dim. in mm | a | 110 | 110 | 110 | 130 | 130 | 130 |
| | b | 106 | 106 | 106 | 130 | 130 | 130 |
| | c | 86 | 86 | 86 | 112 | 112 | 112 |
| | d | 90 | 90 | 90 | 104 | 104 | 104 |
| | e | 90 | 90 | 90 | 104 | 104 | 104 |
| | f | 5.5 | 5.5 | 5.5 | 6.5 | 6.5 | 6.5 |
| | g. | 12 | 12 | 12 | 18 | 18 | 18 |
| | g.1 | 2 | 2 | 2 | 2 | 2 | 2 |
| | k | 28 | 28 | 28 | 28 | 28 | 28 |
| | l | 88.5 | 88.5 | 88.5 | 95 | 95 | 95 |
| | s | 113 | 113 | 113 | 132 | 132 | 132 |
| Terminal for cond. cross section (mm ²) min.-max. | | 6 | 6 | 6 | 25 | 25 | 25 |
| | | -16 | -16 | -16 | -70 | -70 | -70 |