

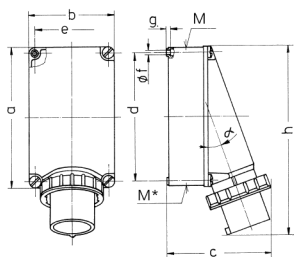
Panel mounted inlet

Part no. 371

Technical specifications

Ampere	63 A
Poles	5 p
Voltage	600-690 V
Clock position	5 h
Hertz	50-60 Hz
Connection technology	Screw terminals
Contact	standard
Protection type	IP 67
Enclosure material	Plastic
Weight	921 g

Drawing



Drawing 2 MB 36	Amp. Poles	63			125	
		3	4	5	4	5
Dim. in mm						
a		170	170	170	264	264
b		118	118	118	163	163
c		171	171	171	205	205
d		134.5	134.5	134.5	240	240
e		103	103	103	140	140
f		6,1	6,1	6,1	3,1	3,1
g		6	6	6	3	3
h		250	250	250	355	355
M		40	40	40	50	50
M*		2x40	2x40	2x40	50	50
a		25°	25°	25°	20°	20°
Max. cable diam. (mm)		27	27	27	38	38
Terminal for cond. cross section (mm²) min.-max.		6	6	6	16	16
		-16	-16	-16	-35	-35