

Wall mounted receptacle

Part no. 5955A

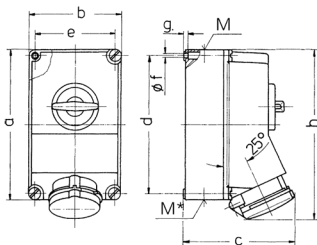


- screw terminals
- X-CONTACT®
- switched
- mechanical DUO-interlock
- receptacles can be padlocked

Technical specifications

Ampere	63 A
Poles	4 p
Voltage	230 V
Clock position	9 h
Hertz	50-60 Hz
Connection technology	Screw terminals
Contact	X-CONTACT®
Protection type	IP 44
Enclosure material	Plastic
Weight	2322 g

Drawing



Drawing 1 MB 234	Amp. Poles	63		
		3	4	5
Dim. in mm	a	264	264	264
	b	163	163	163
	c	192	192	192
	d	240	240	240
	e	140	140	140
	f	8.1	8.1	8.1
	g	8	8	8
	h	300	300	300
	M	40	40	40
	M*	2x40	2x40	2x40
Max. cable diam. (mm)		27	27	27
Terminal for cond. cross section (mm ²) min.-max.		6	6	6
		-25	-25	-25