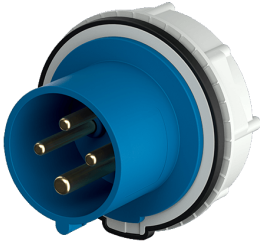


Panel mounted inlet RAPIDO®

Part no. 939

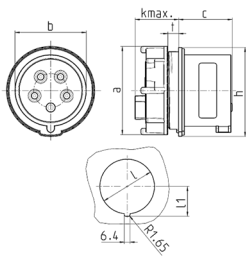


- screw terminals
- for wall aperture 70 mm Ø
- central fixing

Technical specifications

Ampere	32 A
Poles	4 p
Voltage	230 V
Clock position	9 h
Hertz	50-60 Hz
Connection technology	Screw terminals
Contact	standard
Protection type	IP 44
Weight	196 g
Declaration of Conformity	DE, VDE (ÜG)

Drawing



Drawing 2 MB 215	Amp. Poles	16		32		
		4	5	3	4	5
Dim. in mm	a	78	78	78	78	78
	b	50	56	58	58	64
	c	45	44	51	51	51
	k max.	33	33	33	33	33
	h	82	82	82	82	82
	l	70	70	70	70	70
	l1	37.75	37.75	37.75	37.75	37.75
	t	wall thicknesses 2-9mm		wall thicknesses 2-9mm		
Terminal for cond. cross		1.5	1.5	2.5	2.5	2.5
section (mm²) min.-max.		—4	—4	—10	—10	—10